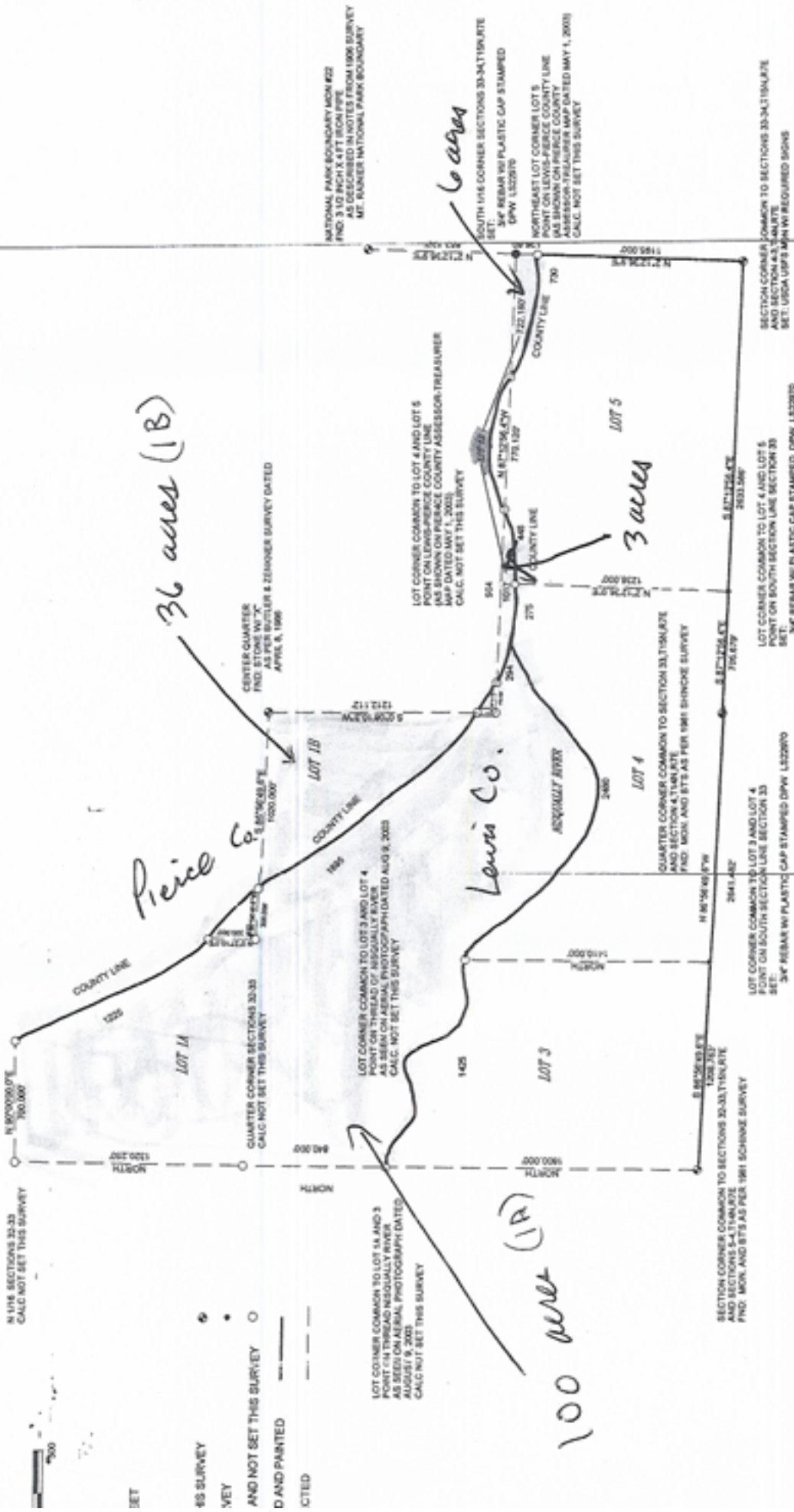


SECTION 33, T15N, R07E, W.M.
LEWIS AND PIERCE COUNTY



E COUNTY LINE REPRESENTATION IS
MAP FROM THE PIERCE COUNTY ASSESSOR-
OFFICE DATED MAY 1, 2003.

ISSUALLY RIVER IS BASED ON AERIAL
DATED AUGUST 9, 2001.



OLYMPIC RESOURCE MANAGEMENT, LLC
321 MAURIN RD. STE. C CHEWELIS, WA 98532
PHONE (360) 740-4323 FAX (360) 740-4356
DATE: JUNE 17, 2003
JOB NO:
DRN: DPW
CHKD: DPW
SCALE: 1 IN = 500 FT SHEET 1 OF 1

RECORD OF SURVEY DESCRIPTION
SOUTH HALF SOUTHWEST QUARTER, SOUTHWEST QUARTER, AND PORTIONS OF SOUTHWEST QUARTER, NORTHWEST QUARTER, SECTION 33, T15N, R07E, W.M., LEWIS AND PIERCE COUNTIES, STATE OF WASHINGTON.

SURVEYOR'S CERTIFICATE
THIS MAP CORRECTLY REPRESENTS A SURVEY MADE BY ME OR UNDER MY DIRECTION IN CONFORMANCE WITH THE REQUIREMENTS OF THE SURVEY RECORDING ACT AT THE REQUEST OF POPE RESOURCES IN MARSH 2008

David P. Walcott
PLM 22970

1 PG
1:1000 \$95.00
WASHINGTON
COUNTY ASSESSOR